

BPC East Package 3 Pipe Bursting & Open-cut

Non-Mandatory WebEx Pre-Bid Meeting

Friday, February 12, 2021

Joshua Garcia, P.E.

Project Engineer

Janie Powell

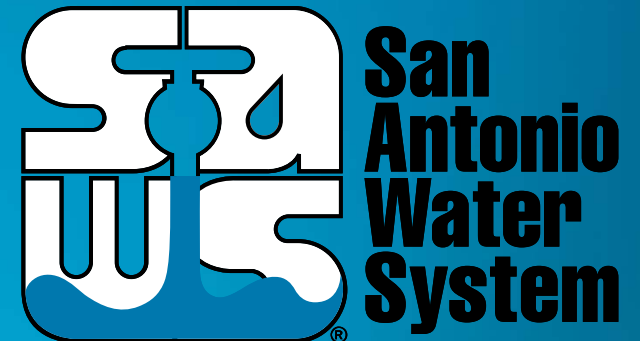
Contract Administrator

Marisol V. Robles

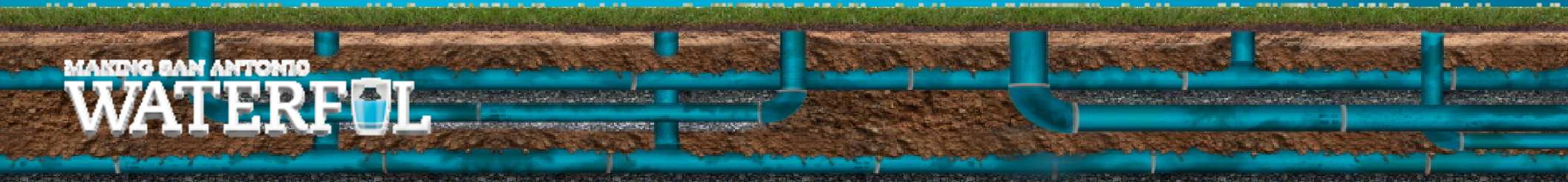
SMWVB Program Manager

Julian P. Bielawski, P.E.

Project Engineer of Record



MAKING SAN ANTONIO
WATERFUL



Oral Statements

Oral statements or discussion during the pre-bid meeting today will not be binding, nor will it change or affect the terms or conditions within the Plans and Specifications of this Project. Changes, if any, will be addressed in writing only via an Addendum.

Agenda

- General Information
- Small, Minority, and Women-Owned Business (SMWB Requirements)
- IFB Schedule
- Contract Solicitation Website
- Vendor Registration & Notification (VRN)
- Contract Requirements
- Bid Packet Preparation
- Key Reminders
- Temporary Bid Opening Instructions
- Contact Information
- Project Overview
- Project Details
- Project Summary
- Questions

General Information

- Non-Mandatory pre-bid meeting
- Presentation has been posted on SAWS website
- Geotechnical report and Environmental assessments have been posted on SAWS website for access with a signed disclaimer.
- Construction services being procured through IFB (low bid)
- Construction Estimate: \$1,465,428.92
- Calendar Days: 365 days

Aspirational SMWB Goal

Industry	Aspirational SMWB Goal
Construction	20%

The aspirational SMWB goal is 20% of your total bid price.

Accepted SMWVB Certification Agency

- **South Central Texas Regional Certification Agency**
 - MBE, WBE, SBE (Includes “HUB” Program)

Minimum Qualifications for SMWVB recognition:

- **SBE-Certified** (even MBEs and WBEs)
- **Local office or local equipment yard**

Good Faith Effort Plan (GFEP) FAQs

- **Q: Is the 20% SMWB goal mandatory?**
A: No, but we ask prime contractors to do their best with good faith outreach efforts. If the goal is not met, proof of outreach efforts is required with the submittal.
- **Q: What if I am having trouble finding SMWB subcontractors?**
A: Please email the SMWVB Program Manager with the scopes of work you are seeking. You will receive lists of local SMWVB-certified firms to contact.
- **Q: What if my business is SMWB-certified? Do I need to find SMWB subs?**
A: If your firm is SMWVB-certified, you will most likely meet the goal. However, the GFEP is a required document, and a good faith outreach effort is still necessary.
- **Q: Do I need to include all my subcontractors in the GFEP or just those that qualify towards the SMWB goal?**
A: All subcontractors need to be included in the GFEP, even those that may not count towards the SMWB goal.
- **Q: What if I have questions about the GFEP?**
A: Please contact the SMWVB Program Manager at 210-233-3420, or at Marisol.Robles@saws.org. GFEP questions can be asked at any time before the submittal is due.

Post Award: Subcontractor Payment & Utilization Reporting (S.P.U.R.) System

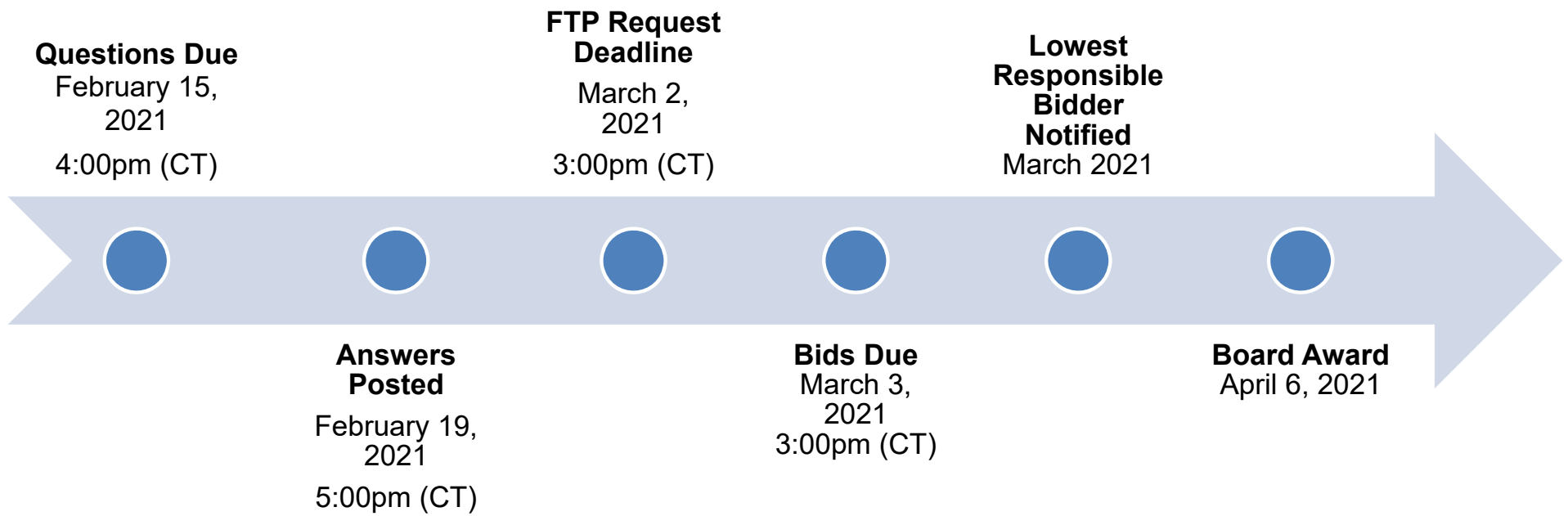
1. Subcontractor & Supplier Payment Tracking
2. Subcontractor and Supplier Additions or Substitutions
3. LCP Tracker
4. Must be Current and Accurate before Retainage is released

<https://saws.smwbe.com>



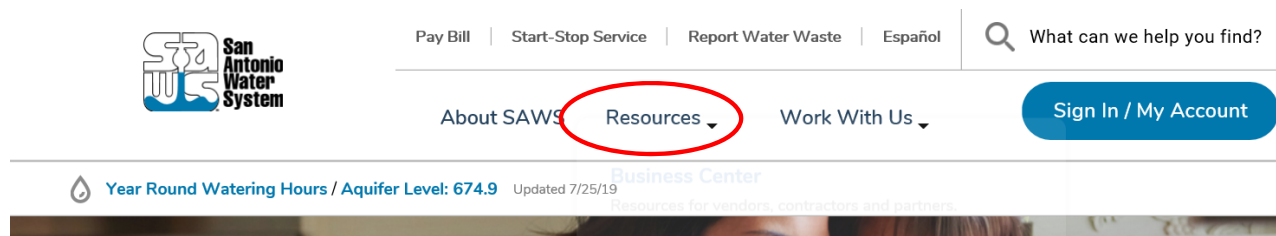
BPC East Package 3 Pipe Bursting & Open-Cut

IFB Schedule

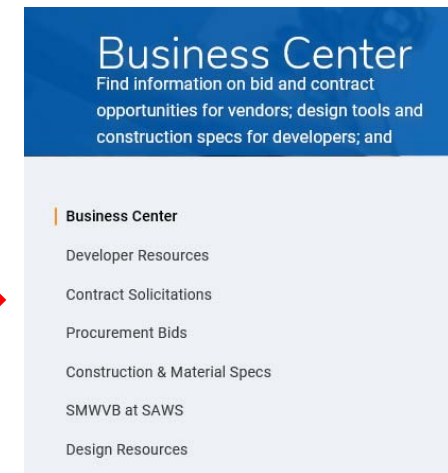


Contract Solicitations Website

- To locate the Contract Solicitations website choose Resources



- At the drop down menu choose Contract Solicitations.



Vendor Registration & Notification (VRN)

Reasons to Register in the VRN

- Receive bid notices directly in your email “Inbox”.
- Download bid documents.
- Subscribe to specific bids.
- Receive addendum notifications.



Notify Me

Receive updates sent straight to your inbox.

Subscribe

https://apps.saws.org/Business_Center/Contractsol/

Contract Requirements

Prevailing Wage Rate and Labor Standards – Section 2.10 of the General Conditions

- Payroll records are subject to review
- Contractors to utilize LCP Tracker
- Certified payroll to be submitted on weekly basis
- Contractors are responsible for sub-contractor payroll
- Late payrolls delay contractor payments from SAWWS
- Wage decisions are included within the specifications
- Site visits are random and unannounced
- Interviews will be conducted and will be private & confidential
- All apprenticeship programs will need to be approved by Department of Labor prior to starting

Contract Requirements

Supplemental Conditions

- Insurance requirements are found in Section 5.7 of the GCs
 - Installation Floater in lieu of Builder's Risk
 - Maintain insurance coverage during the construction of this Project
- Will ask for insurance prior to Board award to expedite execution of the contract
- Compliant prior to executing the contract

Contract Requirements

Supplemental Conditions (Continued)

Apparent Low Bidder

- Notified within 24 hours of Bid Opening
- Detailed baseline schedule with NTP of April 12, 2021
- Thoroughly complete Statement of Bidder's Experience form
 - Projects should meet requirements identified in the solicitation
 - References and contact information must be verified prior to submitting

Contract Requirements

Supplemental Conditions (Continued)

- Contractor shall perform the work with its own organization on at least 40% of the total original contract price which should be indicated on the Good Faith Effort Plan.

Type/s of Certification: SBE: _____ MBE: _____ VBE: _____ WBE: _____

Prime Contractor's Percentage of Participation: (Ex: 100% is the total value of the contract.) _____ %

Describe your firm's participation to be performed on this Project: _____

- Liquidated damages will be assessed at \$1,930.00 a day for final completion extending beyond contract time.

Bid Packet Preparation

- Utilize the Bid Packet Checklist within the specifications
- Double check all mathematical calculations and verify all extensions
- Ensure Mobilization and Preparing Right-Of-Way do not exceed percentage
- Addendums are acknowledged on the Bid Proposals
 - Check our website regularly for addendum postings
 - It is possible to have multiple addendums during the time frame in addition to the scheduled final addendum

Bid Packet Preparation (cont.)

- Low apparent bidder will submit additional required documents within 24 hours. To include:
 - Detailed baseline schedule with 4/12/21 Notice to Proceed date
 - Statement of Bidders Experience form
 - W-9
 - Statement of Ability to complete work with existing commitments
 - Conflict of Interest Questionnaire
 - Proof of insurance (Certificate of Insurance or Letter from Agent)
 - Company Informational Packet

Key Reminders

- All questions should be sent in writing to the corresponding Contract Administrator by email or fax.
- Please identify the project by its associated solicitation number.
(CO-00412)

Temporary Bid Opening Procedures

- Bids will be submitted using SAWS' temporary bid opening procedures
- SAWS encourages and prefers the submission of electronic bids using its secure FTP site.
 - Bidders should submit a request via email to obtain access to the site no later than 24 hours before the bid opening.
- Or, Bidders may drop off bid; but only the required items
 - Drop box is located at 2800 US Hwy 281 N, Customer Service Tower
 - Enter the first set of glass double doors
 - Insert into the black drop box on the wall on the left hand side
- Late bids will not be accepted and will be returned unopened.
- Bid Opening will be handled via WebEx only; link found in IFB

Contact Information

<u>Contact Name</u>	<u>Title</u>	<u>Telephone Number</u>	<u>Email address</u>
Janie Powell	Contract Administrator	210-233-2443	Janie.Powell@saws.org
Marisol Robles	SMWVB Program Manager	210-233-3420	Marisol.Robles@saws.org

REMINDER

Please be advised that Bidders are prohibited from communicating with any other SAWS staff, the Consultant, the Developer, or City of San Antonio officials regarding this IFB up until the contract is awarded as outlined in the Instructions to Bidders

Project Overview

Location:

Project location- 10 sites

Pipe Length:
OC- 634 lf,
PB: 3,014 lf

New MH: 10

Adjustment to MH's: 19

Rehab MH's: 130 ft



BPC East Package 3 Pipe Bursting & Open-Cut



Project Overview

Statement of Bidder's Experience

- Ability to complete the project within schedule.
- Project experience shall be of projects completed between 2015 and 2021 by open-cut and pipe bursting sewer line installation.
- Demonstrate experience in installing at least 1,000 LF of 8 inch or greater sanitary sewer pipe by Pipebursting.
- Demonstrate experience in installing at least 1,000 LF of 8 inch or greater sanitary sewer pipe by Open-cut method.
- Demonstrate experience working within CoSA ROW.

Project Overview

Special Conditions

➤ Project Data:

Plans, specifications, environmental reports, SUE data and Geotechnical information.

➤ CPS Allowance:

Allowance for Pole Bracing and gas main adjustment is for payment to CPS only.

➤ Flood Protection:

The project sites are not within floodplain area. Contractor is advised to proceed with caution when working near these areas during rain events.

➤ Mill & Overlay:

To be completed as a separate contract.

Project Overview

Supplemental Conditions

- Open Trench:

Maximum length of open trench shall not exceed 400 ft.

- PipeBurst Segments Pipe Connection at Manholes:

Contractor shall prepare the manhole for pipe bursting operation and pipe connection, sewer pipe connection to manhole & manhole preparation is not a standard pay item.

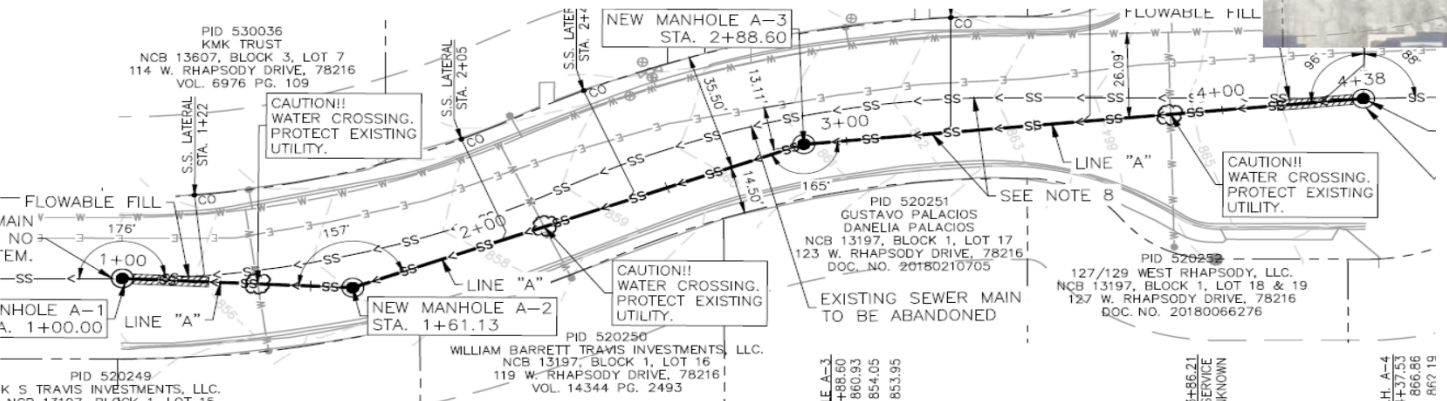
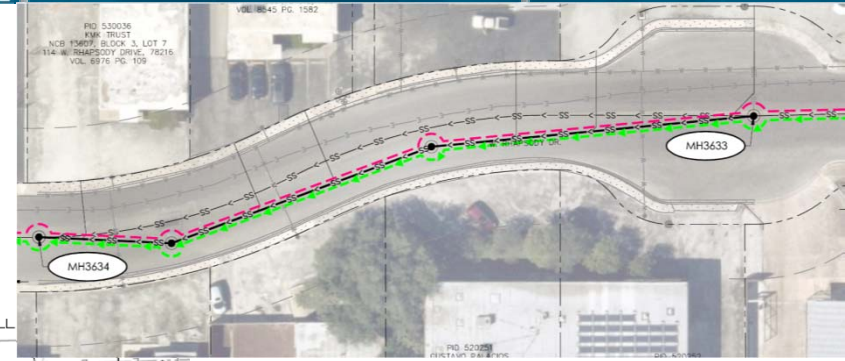
- Pipe Bursting Restoration:

All site restoration associated with pipe bursting shall be considered incidental to the cost of Pipe bursting unless specified otherwise.

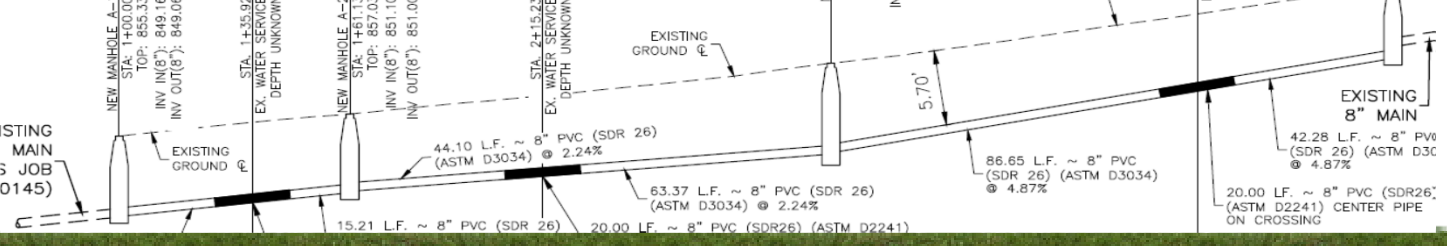
- Abandonment of manholes:

Manholes will be grouted and paid for each manhole irrespective of their depth.

Project Details: Site C7: OpenCut



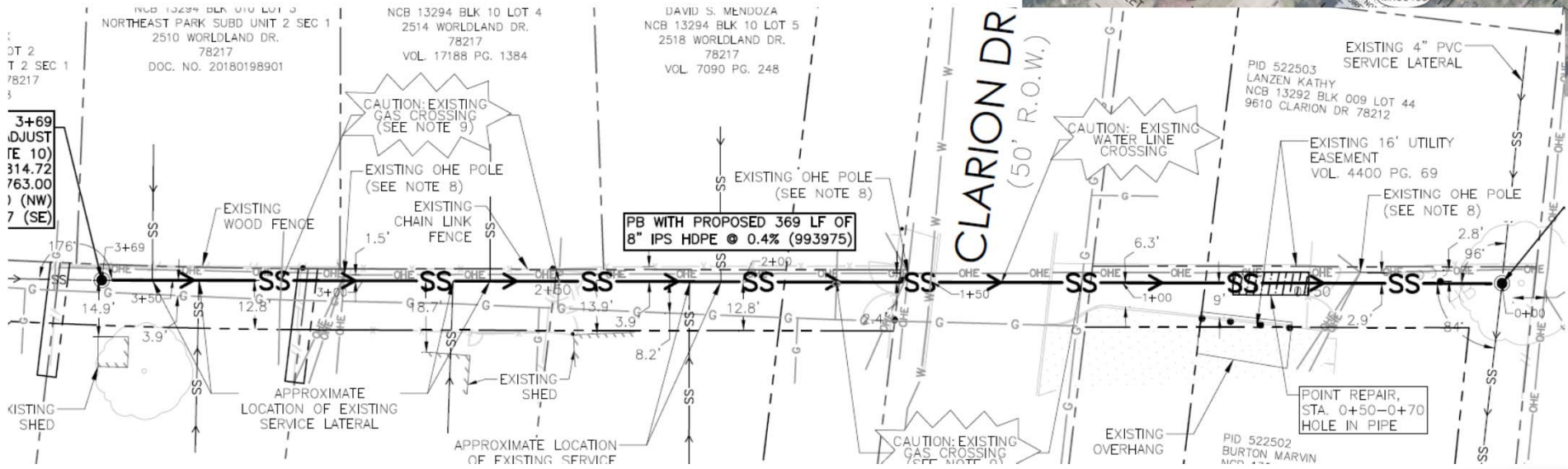
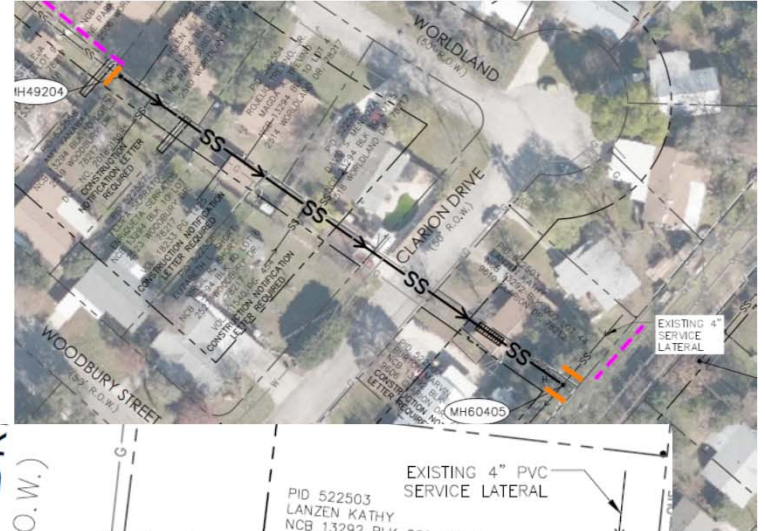
SANITARY SEWER LINE "A" (OPEN CUT) STA: 1+00.00 TO 4+37.53



BPC East Package 3 Pipe Bursting & Open-Cut



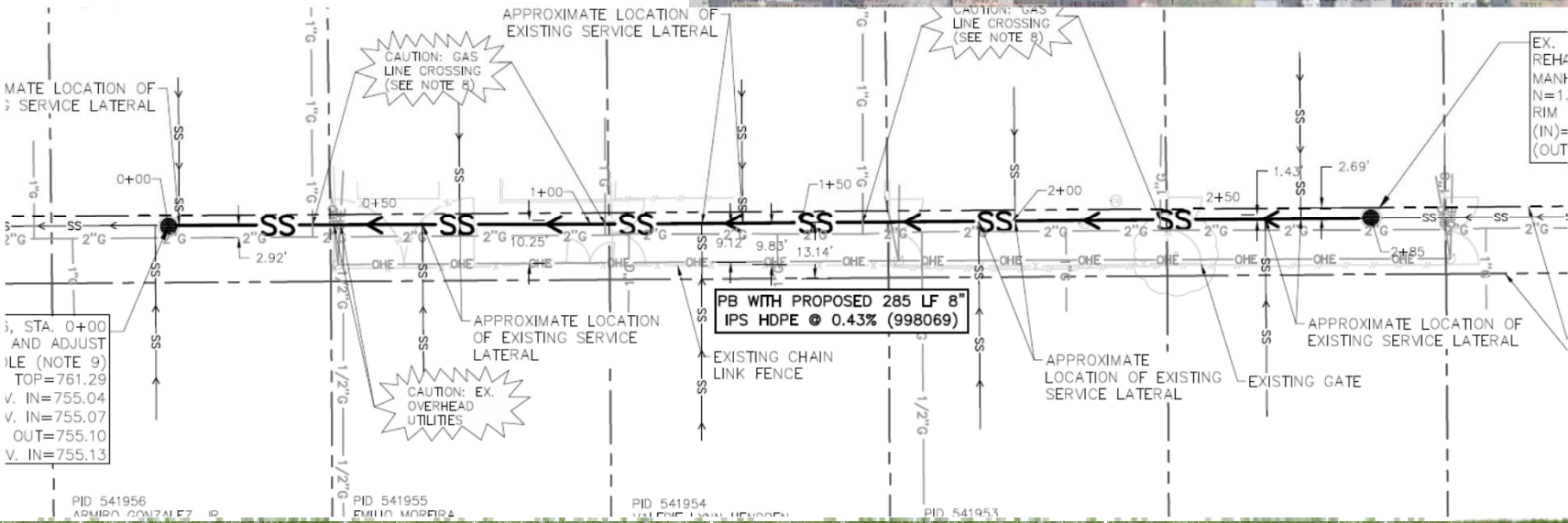
Project Details: Site CI9: PB



BPC East Package 3 Pipe Bursting & Open-Cut



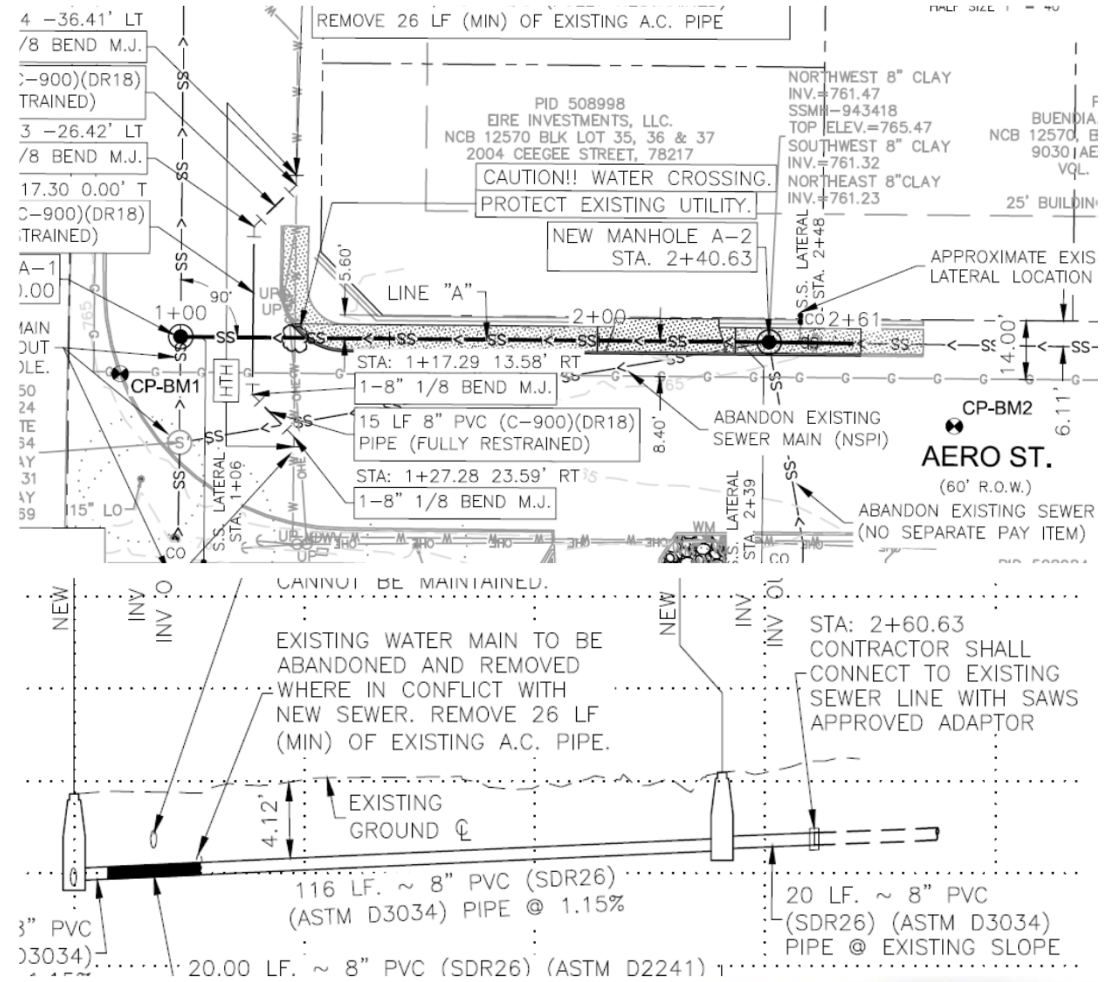
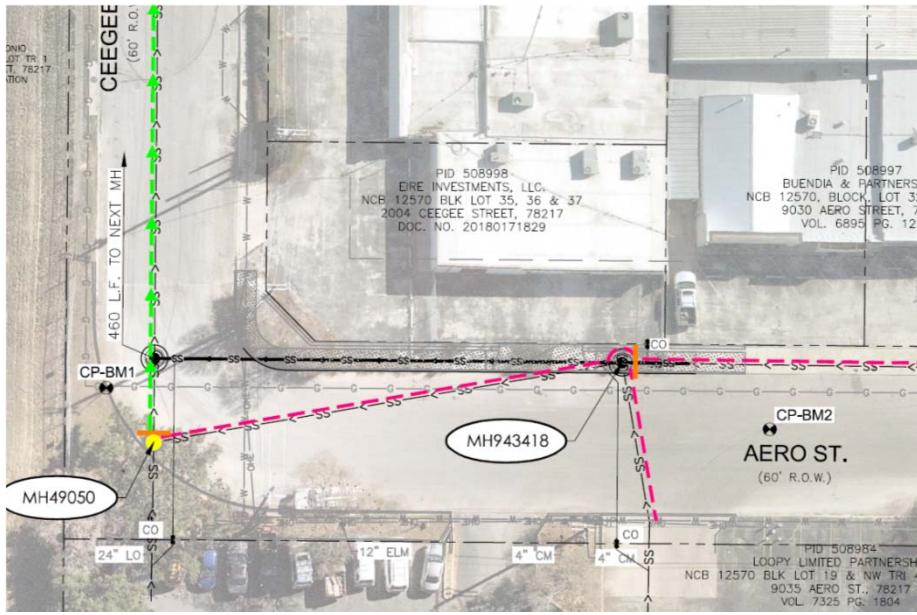
Project Details: Site C23: PB



BPC East Package 3 Pipe Bursting & Open-Cut



Project Details: Site C25: Opencut

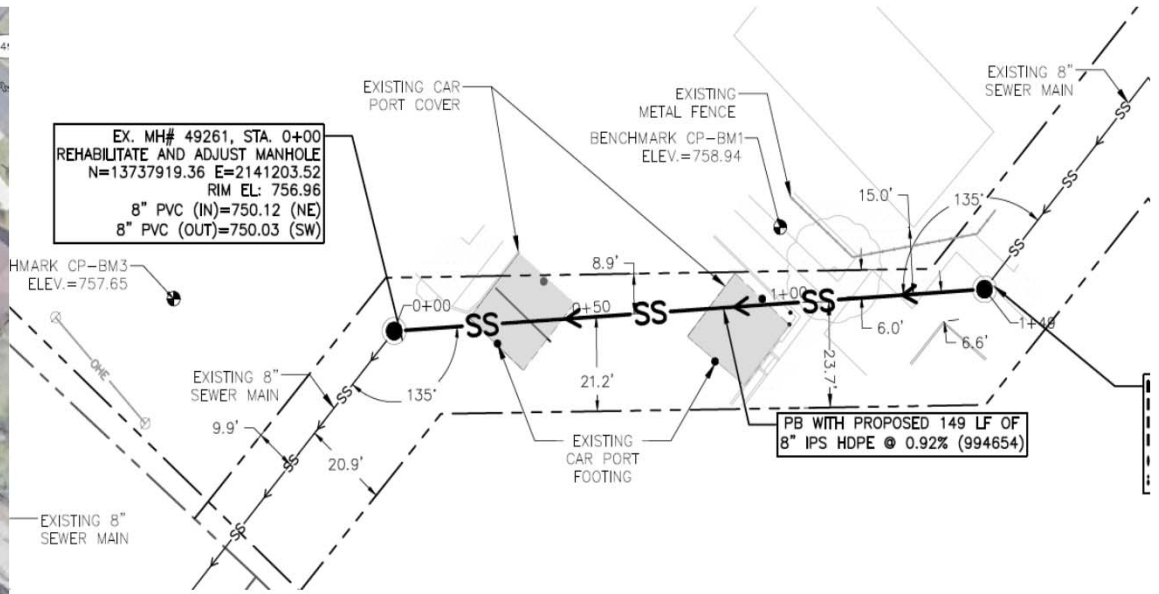
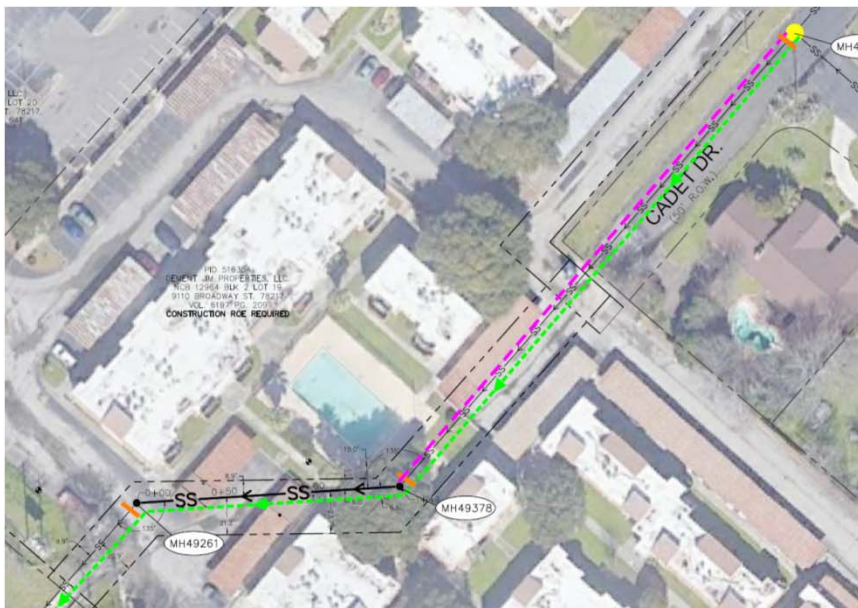


BPC East Package 3 Pipe Bursting & Open-Cut



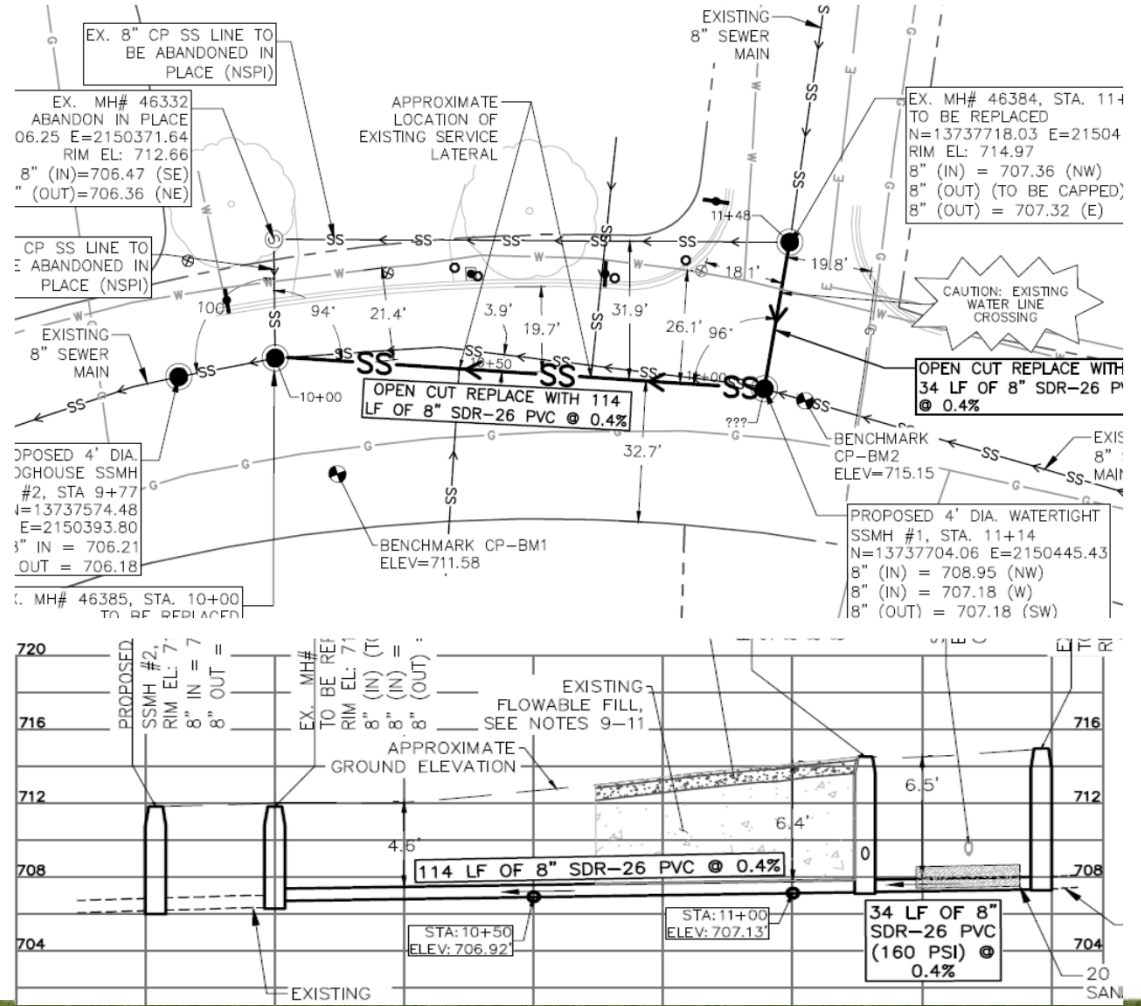
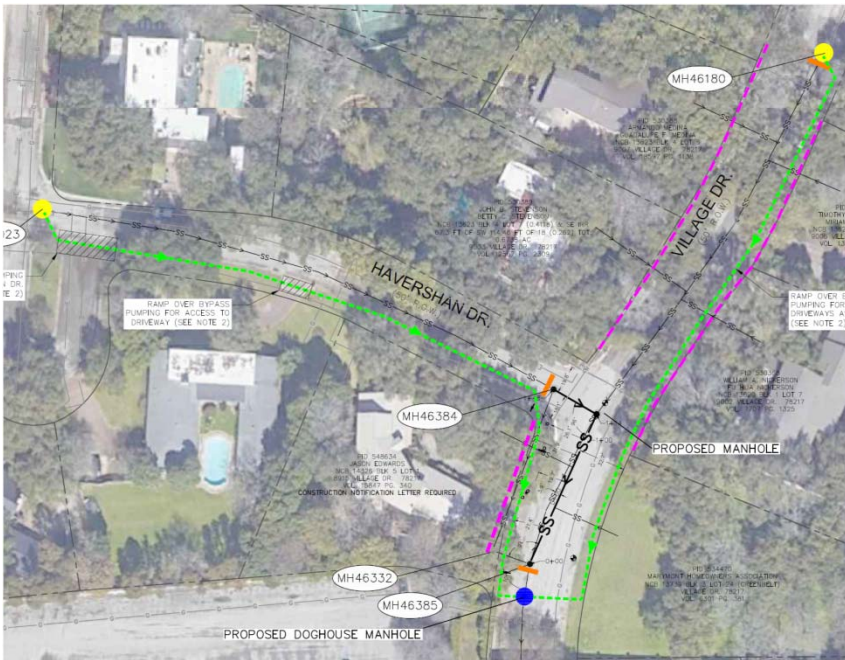
Project Details:

Site C26: PB



Project Details:

Site C28: Opencut



BPC East Package 3 Pipe Bursting & Open-Cut



Project Summary:

- Open Cut Installation:
- PB rehabilitation:
- Bypass pumping:
- Traffic Control:
- New Manholes:
- Manhole rehabilitation:
- Manhole adjustments:
- Televising Inspection:

QUESTIONS



Reminder: Oral statements or discussion during the pre-bid meeting today will not be binding, nor will it change or affect the terms or conditions within the Plans and Specifications of this Project. Changes, if any, will be addressed in writing only via an Addendum.